

User manual - Piste

Quick menu

This view presents the current status of unit activity and piste status. In the drop down menu you can select to see the activity by pistes or units.

Work status

Here the status of the pistes is presented in a chart. Green is pisted and red is unpisted.

Pistes

Here the status of the piste is presented in a table. You can get detailed information of a piste and see which units that have been working on the piste by clicking on show detail.

Units

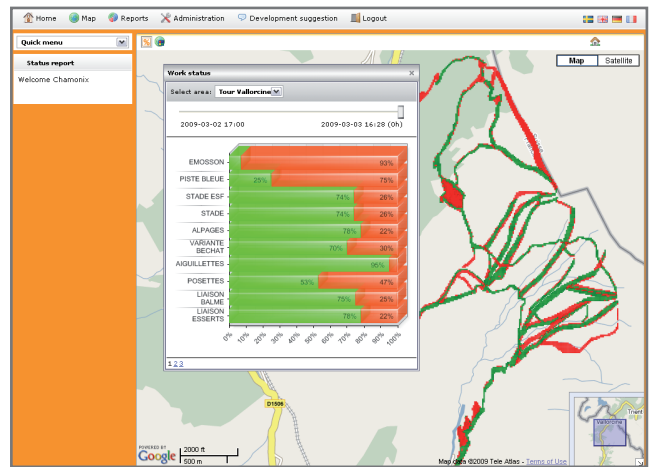
This table presents the performed vehicle activities. You can get detailed information and see where the unit has been working by clicking on show detail.

Layer picker

In the layer picker you can toggle the custom shapefile (own map) displayed on Google maps. You can also toggle between regular shapefile and grid view where each grid represents the activity geographically.

Snow unit report

This report is unique to piste customers. The activity is presented day by day, summarized for the complete selection. This is a great overview on average performance and the level of activity of the vehicles.

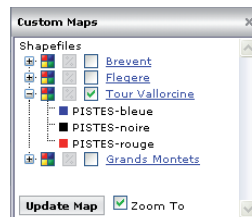


Active Machines [17:00] - 16:29

Show Detail	Unit Name	Unit ID	First Activity	Last Activity	Engine on
<input type="checkbox"/>	K3 W AGM	1040	2009-03-02 17:34:47	2009-03-03 01:03:53	00:00:00
<input type="checkbox"/>	K3 AGM	1041	2009-03-02 17:37:49	2009-03-03 00:51:32	05:43:00
<input type="checkbox"/>	K3 AGM	1042	2009-03-02 17:32:40	2009-03-03 06:16:23	10:31:00
<input type="checkbox"/>	P10 W AGM	1043	2009-03-02 17:26:50	2009-03-02 17:28:51	00:02:00
<input type="checkbox"/>	P11 W AGM	1044	2009-03-02 17:27:23	2009-03-02 00:51:27	05:50:00
<input type="checkbox"/>	KASS 300 W BLM	1046	2009-03-02 17:13:13	2009-03-03 01:33:56	06:50:00
<input type="checkbox"/>	PR600 BLM	1047	2009-03-02 17:33:01	2009-03-02 22:43:53	06:06:00
<input type="checkbox"/>	PR1000 W BLM	1049	2009-03-02 17:20:43	2009-03-03 08:56:35	06:06:00
<input type="checkbox"/>	PR1000 W BLM	1050	2009-03-02 17:22:07	2009-03-03 01:54:35	06:20:00
<input type="checkbox"/>	PR600 W BREVENT	1056	2009-03-02 17:37:32	2009-03-03 15:40:09	00:00:00
<input type="checkbox"/>	PR300 W BREVENT	1058	2009-03-02 17:38:09	2009-03-03 09:55:25	06:21:00
<input type="checkbox"/>	PR304 BREVENT	1059	2009-03-02 17:24:44	2009-03-03 09:25:08	06:36:00
<input type="checkbox"/>	PR305 BREVENT	1060	2009-03-02 17:22:43	2009-03-03 00:51:57	06:13:00
<input type="checkbox"/>	PR 400 DiW BLM	1089	2009-03-02 17:14:09	2009-03-03 01:50:47	06:44:00
<input type="checkbox"/>	AGM KASS 3 TREUIL-2	1096	2009-03-02 17:27:49	2009-03-03 09:47:56	00:00:00
<input type="checkbox"/>	PR 400 BREVENT	1098	2009-03-02 17:25:34	2009-03-03 15:45:26	06:29:00

Active pistes [17:00] - 14:38

Show Detail	Piste Name	Pisted Area (ha)	Total Area (ha)	%
<input type="checkbox"/>	EMOISSON	2.04	25.98	6.9%
<input type="checkbox"/>	PISTE BLEUE	0.96	2.84	33%
<input type="checkbox"/>	STADE ESF	4.32	5.6	77.33%
<input type="checkbox"/>	STADE	2.72	3.6	75.56%
<input type="checkbox"/>	ALPAGES	11.44	14.72	77.72%
<input type="checkbox"/>	VARIANTE BECIANT	17.36	24.9	70%
<input type="checkbox"/>	AGULLETTES	2.29	2.44	93.85%
<input type="checkbox"/>	POSETTES	6.24	11.6	53.8%
<input type="checkbox"/>	LIAISON BALME	7.68	10.2	75.29%
<input type="checkbox"/>	LIASION ESSERTS	3.44	4.4	78.18%
<input type="checkbox"/>	FORET VERTE	2.92	2.6	112.5%
<input type="checkbox"/>	BELLE PLACE	13.4	19.24	69.65%
<input type="checkbox"/>	PISTE ROUGE	0	0.4	0%
<input type="checkbox"/>	ESSERTS	18.16	27.84	65.23%
<input type="checkbox"/>	VARIANTE ESSERTS	0	0.64	0%
<input type="checkbox"/>	LES CAISSETS	18.28	25.4	71.97%



Choose type of report

Unit Name	Unit ID	Date	First activity	Last activity	Engine on	In motion	Standing on	Efficiency	Total Snow with Sensor 1	Total Snow with Sensor 2	Max Speed	Average Speed	Distance	ha
AGM KASS 3 TREUIL-2														
K3 W AGM	1040	2009-03-16	00:00:00	00:00:00	00:00:00	00:00:00	00:00:00	00:00:00	00:00:00	00:00:00	00:00:00	00:00:00	00:00:00	00:00:00
K3 AGM	1041	2009-03-16	00:00:00	00:00:00	00:00:00	00:00:00	00:00:00	00:00:00	00:00:00	00:00:00	00:00:00	00:00:00	00:00:00	00:00:00
KASS 300 W BLM	1046	2009-03-16	00:00:00	00:00:00	00:00:00	00:00:00	00:00:00	00:00:00	00:00:00	00:00:00	00:00:00	00:00:00	00:00:00	00:00:00
PR600 BLM	1047	2009-03-16	00:00:00	00:00:00	00:00:00	00:00:00	00:00:00	00:00:00	00:00:00	00:00:00	00:00:00	00:00:00	00:00:00	00:00:00
PR1000 W BLM	1049	2009-03-16	00:00:00	00:00:00	00:00:00	00:00:00	00:00:00	00:00:00	00:00:00	00:00:00	00:00:00	00:00:00	00:00:00	00:00:00
PR1000 W BLM	1050	2009-03-16	00:00:00	00:00:00	00:00:00	00:00:00	00:00:00	00:00:00	00:00:00	00:00:00	00:00:00	00:00:00	00:00:00	00:00:00
PR600 W BREVENT	1056	2009-03-16	00:00:00	00:00:00	00:00:00	00:00:00	00:00:00	00:00:00	00:00:00	00:00:00	00:00:00	00:00:00	00:00:00	00:00:00
PR300 W BREVENT	1058	2009-03-16	00:00:00	00:00:00	00:00:00	00:00:00	00:00:00	00:00:00	00:00:00	00:00:00	00:00:00	00:00:00	00:00:00	00:00:00
PR304 BREVENT	1059	2009-03-16	00:00:00	00:00:00	00:00:00	00:00:00	00:00:00	00:00:00	00:00:00	00:00:00	00:00:00	00:00:00	00:00:00	00:00:00
PR305 BREVENT	1060	2009-03-16	00:00:00	00:00:00	00:00:00	00:00:00	00:00:00	00:00:00	00:00:00	00:00:00	00:00:00	00:00:00	00:00:00	00:00:00
PR 400 DiW BLM	1089	2009-03-16	00:00:00	00:00:00	00:00:00	00:00:00	00:00:00	00:00:00	00:00:00	00:00:00	00:00:00	00:00:00	00:00:00	00:00:00
AGM KASS 3 TREUIL-2	1096	2009-03-16	00:00:00	00:00:00	00:00:00	00:00:00	00:00:00	00:00:00	00:00:00	00:00:00	00:00:00	00:00:00	00:00:00	00:00:00
PR 400 BREVENT	1098	2009-03-16	00:00:00	00:00:00	00:00:00	00:00:00	00:00:00	00:00:00	00:00:00	00:00:00	00:00:00	00:00:00	00:00:00	00:00:00

