

VisualAlpine 3D

Accurate 3D snow groomer guidance

Guiding your Snow Groomer to where it is needed

VisualAlpine 3D offers you the possibility to accurately control the shaping and moving of snow on your ski slopes and in your terrain parks in 3D.

VisualAlpine shows you everything
Supplying visual guidance info to the operator in the cabin based on sensor input from:

- RTK GPS with antenna positioned on the roof or blade.
- Angle sensors on blade to measure cross and long slope.

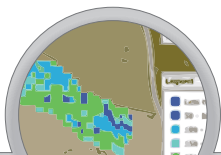
Indicator will clearly show left/right, cut and fill to:

- Side distance to edges of design surface.
- Warning zone around hazards marked in the 3D model, like water hydrants and snow canons are displayed to the operator.

How does it work?

A 3 dimensional model of the bare terrain can serve as reference. All the operator has to do is to dial in the specified snow depth and GO.

Alternatively a more complex 3D model can be created with varying snow depth in designated areas based on your experience about snow movements during the season.



Snow depth data from VisualAlpine 3D can be viewed in Viewserve Alpine

This design function will also allow you to recreate last season's perfectly designed terrain park. Simply scan or measure this years design and use the 3D model when you build up next year. You can now offer "signature" parks designed by one of the hot shot riders year after year.

3D data can be logged to follow snow movements and melting patterns over time and data can be used to efficiently manage your use of snow.

Experience increased productivity
Monitor snow depth anywhere anytime.

- Distribute the right amount of snow hereby extending the life of your tracks and the season.
- Optimize production of artificial snow where and when it is needed.
- Minimize energy cost, rationalize electricity usage.
- Control water usage -no wasting of water due to excessive artificial snow production.
- Keeping track of obstacles and objects hidden under the snow eliminates expensive accidents.
- High accuracy of snow depth (+/-5 cm).
- Robust solution developed for years in the construction Industry.

