

# SmartNet/Spider - Viewserve Quick Guide

1. Login to Viewserve <http://evolution.viewserve.com>
2. Once you have opened the Viewserve panel the main menu will be displayed.
3. Viewing the survey routes of licenses.

Tick the licenses (3.1) that you wish to see survey routes for. Licenses with small red/green/yellow bars are the ones that contain data.

Once licenses are selected, click "Load route(s)" (3.2).

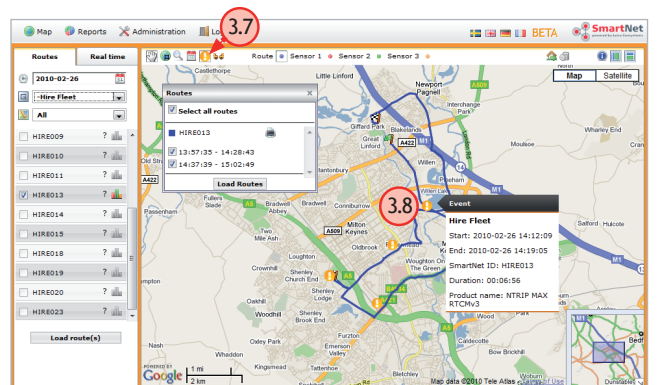
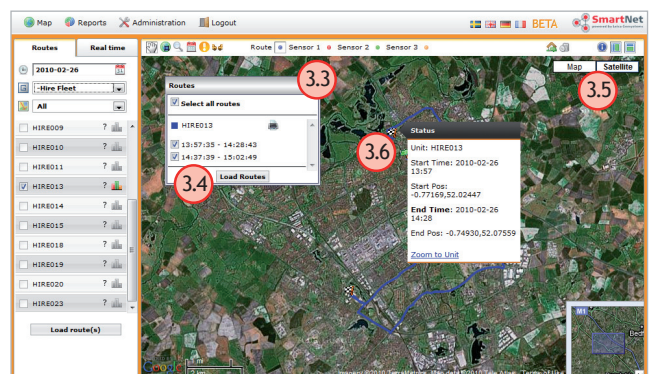
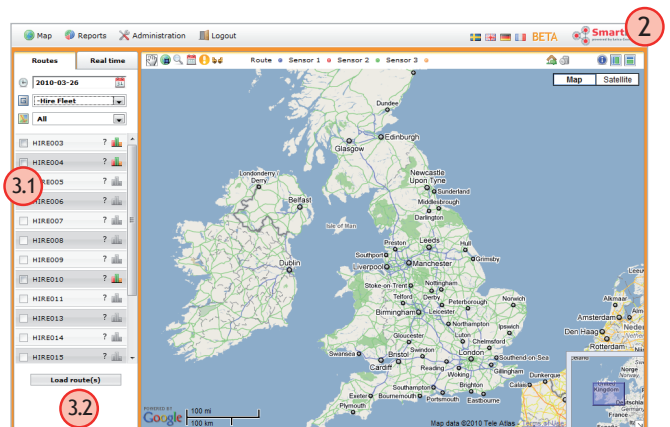
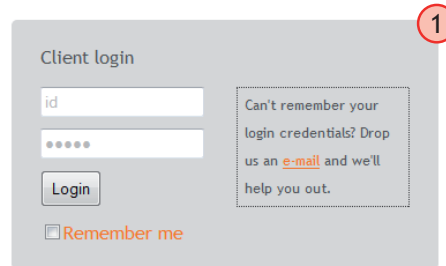
The route(s) will be loaded in a pop up box that appears above the map (3.3).

Select all routes or choose the times of connections you want to see. Then click "Load Routes" (3.4).

You can choose to view the map as satellite imagery, by selecting the "Satellite" button in the top right corner of the map (3.5). You can also click on the map and scroll zoom to the route detail.

The green and chequered flags on the route will show you the status details of the connection (3.6).

You can also select the "event" icon (3.7) in the toolbar above the map. This shows you further details of the connection times, plus the SmartNet/Spider product that the license was using, i.e. NTRIP MAX RTCMv3 (3.8).



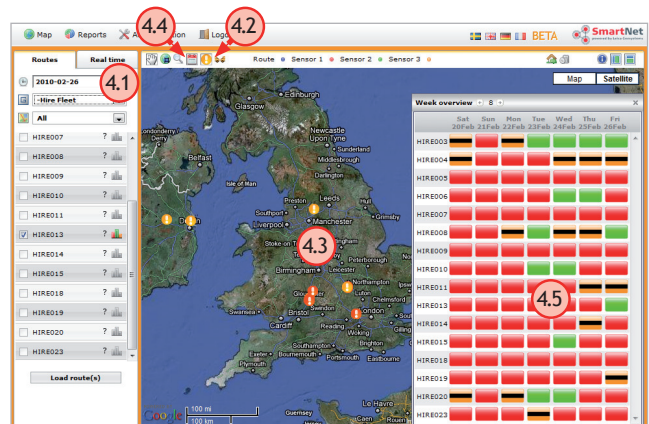
# SmartNet/Spider - Viewserve Quick Guide

## 4. Viewing all license connections

Select an appropriate date (4.1) and click the "event" icon (4.2) as described above. You will then be able to view all your SmartNet/Spider license connections in the map (4.3).

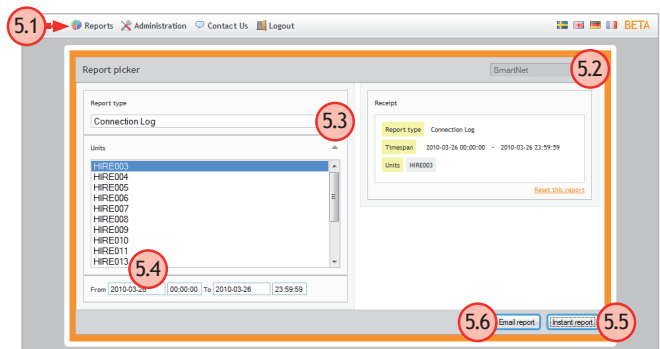
Note: you do not need to tick the license route ID's to view event details only.

Select the calendar icon (4.4) for a week overview of license activity (4.5). Green shows that there is full data available. Orange/Black shows that there is only a short connection or no route data.



## 5. Reports

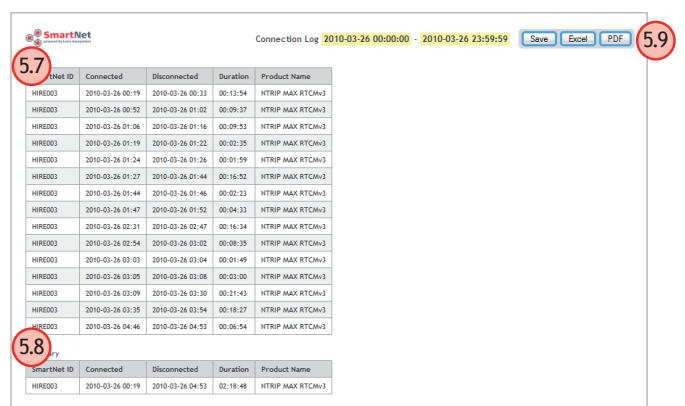
Navigate to the report page (5.1) in the top menu. First define which group you want to see in the report (5.2). Then select the "Connection Log" report in the report type picker (5.3). Finally select units and the time span to be included in the report (5.4).



When the selections are done you can either load the report directly in the interface (5.5) or you can choose to send it by email as a PDF or an Excel file (5.6).

The final report will be created for each license as follows (5.7).

At the bottom of the list you will see a summary of the total license connections (5.8).



The report can also be exported to a PDF or to an Excel file (5.9) after generation.